

# CERTIFICATE OF ANALYSIS

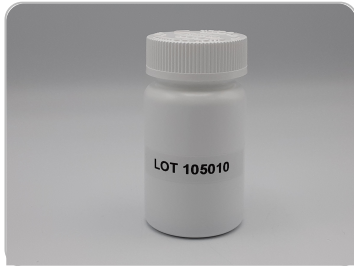
## ISO/IEC 17025:2017 ACCREDITATION #103104



Order #: 78781  
 Order Name: Immune Support Softgels  
 Batch#: 105010  
 Received: 06/09/2021  
 Completed: 06/14/2021



### Sample



<b>0.265%</b> D9-THC	<b>6.836%</b> Total CBD
<b>38.3 mg</b> Cannabinoids per unit	<b>27.3 mg</b> CBD per unit

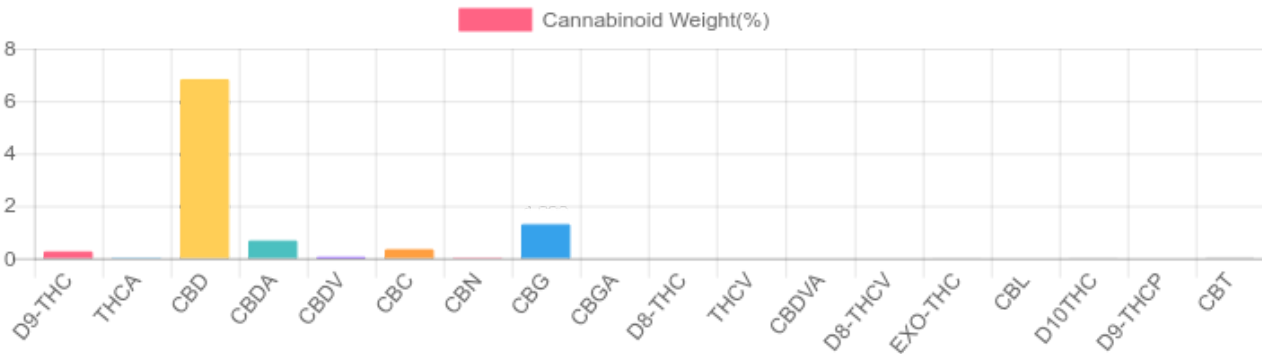
1 unit = .4 grams per unit x Cannabinoid concentration

### Cannabinoids Test

SHIMADZU INTEGRATED UPLC-PDA  
 GSL SOP 400

UPLOADED: 06/11/2021 11:40:17

Cannabinoids	LOQ	weight(%)	mg/g	mg/unit
D9-THC	10 PPM	0.265%	2.653	1.061
THCA	10 PPM	0.007%	0.073	0.029
CBD	10 PPM	6.836%	68.356	27.342
CBDA	20 PPM	0.681%	6.806	2.722
CBDV	20 PPM	0.054%	0.536	0.214
CBC	10 PPM	0.346%	3.461	1.384
CBN	10 PPM	0.011%	0.106	0.042
CBG	10 PPM	1.303%	13.028	5.211
CBGA	20 PPM	N/D	N/D	N/D
D8-THC	10 PPM	N/D	N/D	N/D
THCV	10 PPM	N/D	N/D	N/D
CBDVA	20 PPM	N/D	N/D	N/D
D8-THCV	20 PPM	N/D	N/D	N/D
EXO-THC	20 PPM	0.011%	0.105	0.042
CBL	20 PPM	N/D	N/D	N/D
D10THC	20 PPM	0.022%	0.216	0.086
D9-THCP	20 PPM	N/D	N/D	N/D
CBT	20 PPM	0.051%	0.512	0.205
TOTAL D9-THC		0.265%	0.265%	1.1
TOTAL CBD*		6.836%	68.356	27.3
TOTAL CANNABINOIDS		9.587%	95.852	38.3



Reporting Limit 10 ppm  
 \*Total CBD = CBD + CBDA x 0.877  
 N/D - Not Detected, B/LOQ - Below Limit of Quantification

Dr. Andrew Hall, Ph.D., Chief Scientific Officer

Ben Witten, MS, MT., Lab Director

**Green Scientific Labs**  
 info@greenscientificlabs.com  
 1-833 TEST CBD



Green Scientific Labs uses its best efforts to deliver high quality results and to verify that the data contained therein are based on sound scientific judgment and levels listed are guidelines only and all data was reported based on standard laboratory procedures and deviations. However Green Scientific Labs makes no warranties or claims to that effect and further shall not be liable for any damage or misrepresentation that may result from the use or misuse of the data contained herein in any way. Further, Green Scientific Labs makes no claims regarding representations of the analyzed sample to the larger batch from which it was taken. Data and information in this report are intended solely for the individual(s) for whom samples were submitted and as part of our strict confidentiality policy, Green Scientific Labs can only discuss results with the original client of record.







